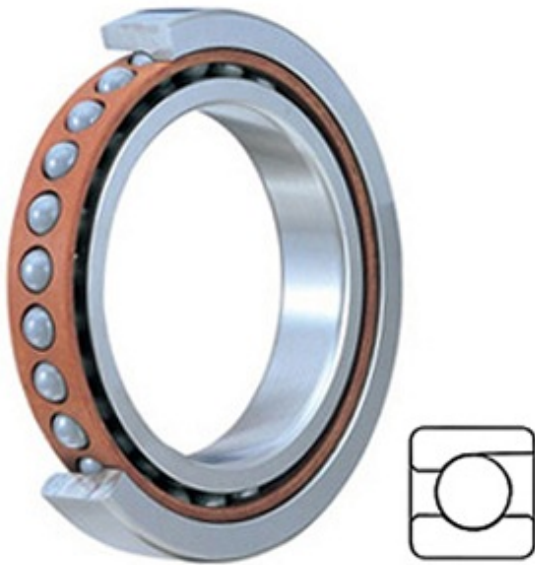




# IPH Series PUMP LTD



5.906 Inch | 150 Millimeter x 8.858 Inch | 225 Millimeter x 1.378 Inch | 35 Millimeter SKF B/EX1507CE3UM Precision Ball Bearings

Bearing No. B/EX1507CE3UM

B/EX1507CE3UM Bearing 2D drawings and 3D CAD models

Category	Precision Ball Bearings
Inventory	0.0
Manufacturer Name	SKF
Minimum Buy Quantity	N/A
Weight	0
Product Group	B04270
Enclosure	Open
Precision Class	ABEC 7   ISO P4
Material - Ball	Steel
Number of Bearings	1 (Single)
Contact Angle	25 Degree
Preload	Medium
Raceway Style	1 Rib Outer Ring
Cage Material	Phenolic
Rolling Element	Ball Bearing
Mounting Arrangement	Universal
Flush Ground	Yes
Inch - Metric	Metric
Other Features	Single Row   Angular Contact
Long Description	150MM Bore; 225MM Outside Diameter; 35MM Width; Open Enclosure; ABEC 7   ISO P4 Precision; Steel Ball Material; 1 (Single) Bearing; 25 Degree Contact Angle; Phenolic



## IPH Series PUMP LTD

	Cage Material; 1 Rib Outer Ring Ra
Category	Precision Ball Bearings
UNSPSC	31171531
Harmonized Tariff Code	8482.10.50.28
Noun	Bearing
Keyword String	Ball Angular Contact
Manufacturer URL	<a href="http://www.skf.com">http://www.skf.com</a>
d	5.906 Inch   150 Millimeter
D	8.858 Inch   225 Millimeter
B	1.378 Inch   35 Millimeter